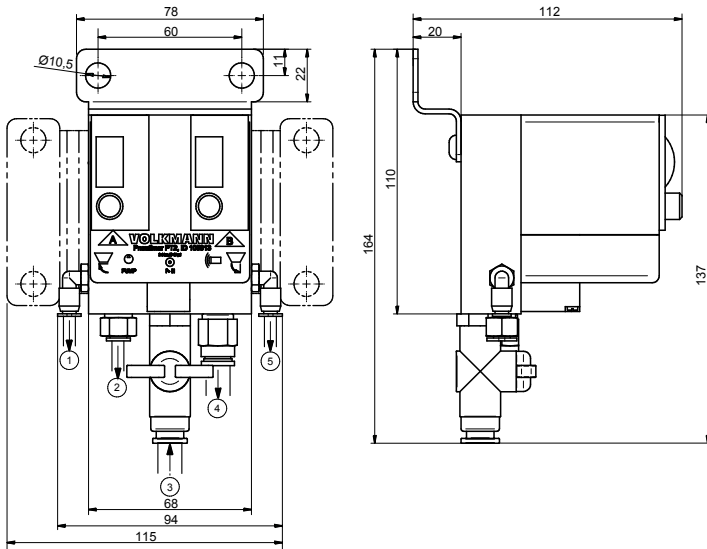



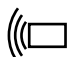



## Pneutimer PT2



### Pneumatic quick connectors

- ①  CLOSE DISCHARGE VALVE G 1/8" / 4 mm hose
- ②  VACUUM PUMP G 1/8" / 4 mm hose
- ③  COMPRESSED AIR IN G 1/8" / 8 mm hose
- ④  VIBRATOR / FLUID G 1/8" / 8 mm hose
- ⑤  OPEN DISCHARGE VALVE G 1/8" / 4 mm hose

All connectors: G1/8" with adaptor for outside tolerated hose.

### Materials

Housing + mounting element: stainless steel  
 Connection block: Aluminum  
 Connectors: brass nickelplated + PBT  
 Timer elements: various plastics + brass

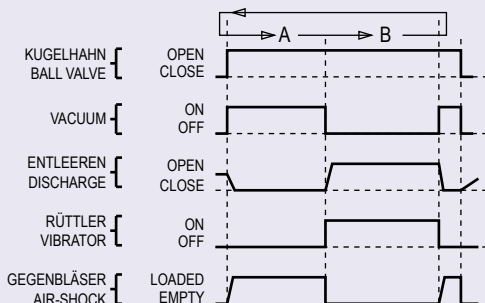
### Operating Temperature

-20 to +60 °C (-4 to +140 °F)

### Operating Pressure:

max. 6 bar (0.6 MPa, 87 psi)  
 same pressure like vacuum conveyor

Pneutimer				
Type	ID-Nr.	Weight	Suction time A	Discharge time B
PT2	105913	0,8 kg	2 - 30 sec	2 - 30 sec



### For easy and safe control of our Vacuum Conveyors

#### Function:

- The Pneutimer (pneumatic timer) PT2 switches between cycles A and B  
 A = Suction Cycle: discharge valve closes/closed; pump signal ON; vibrator OFF  
 B = Discharge Cycle: discharge valve opens/opened; pump signal OFF; vibrator ON
- The PT2 can be switched on and off by a manual ball valve (included)
- Switching on the compressed air, the PT2 starts with the cycle during which it was switched off (either A or B cycle)