



Inlet Vacuum Filters

"CSL" Series 8" - 12" 125/150# Pattern Flange

APPLICATIONS & EQUIPMENT

- ♦ Vacuum Pumps & Systems – P.D., Side Channel, Rotary Vane, Screw, Piston
- ♦ Pneumatic Conveying Systems
- ♦ Food Industry
- ♦ Cement
- ♦ Vacuum Packaging Equipment
- ♦ Remote Install for Piston, Screw & Centrifugal Compressors
- ♦ Paper Processing
- ♦ Bag House Systems
- ♦ Vacuum Furnaces
- ♦ Factory Automation Equip
- ♦ Glass, Ceramic Processing
- ♦ Envelope Manufacturing
- ♦ Blowers - Side Channel & P.D.
- ♦ Ash Handling
- ♦ Waste Water Treatment
- ♦ Chemical Processing
- ♦ Intake Suction Filters

FEATURES & SPECIFICATIONS

- ♦ **Vacuum level:** Typically 1×10^{-3} mmHg (1.3×10^{-3} mbar)
- ♦ **Large** dirt holding capacity and **Easy** field cleaning, especially when mounted horizontally or inverted
- ♦ Polyester: 99%+ removal efficiency standard to 5 micron
- ♦ Inlet/outlet 1/4" gauge taps standard
- ♦ Paper: 99%+ removal efficiency standard to 2 micron
- ♦ Rugged all steel construction w/baked gray enamel finish
- ♦ Heavy duty T bolts for easy maintenance
- ♦ Temp (continuous): min -15°F (-26°C) max 220°F (104°C)
- ♦ Hydrostatically tested to 0.5 bar pressure for vacuum tightness
- ♦ Filter change out differential: 10" - 15" H₂O over initial delta P
- ♦ Low pressure drop
- ♦ Pressure drop graphs available upon request
- ♦ Positive engagement O-ring seal system

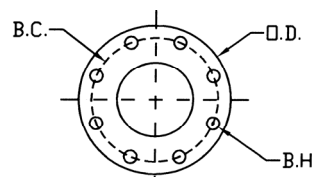
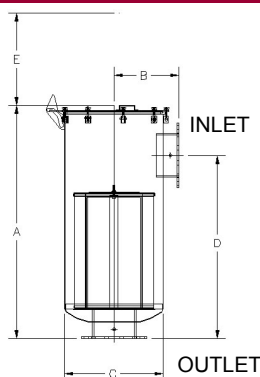
OPTIONS (Inquiries Encouraged)

- ♦ Various media
- ♦ Available in **Stainless Steel**
- ♦ Special connections
- ♦ Larger sizes available
- ♦ Epoxy coated housings
- ♦ Activated carbon prefilters to reduce order
- ♦ Straight-Through Configurations
- ♦ Support brackets

CONFIGURATION



DRAWING



Flange Orientation

Note: All side inlet to bottom outlet flanges are orientated "split center".

Dimension tolerance $\pm 1/4"$

I = Industrial Duty S = Severe Duty E = Extreme Duty

	with Polyester Element	with Paper Element	Flg Inlet & Outlet	DIMENSIONS - inches							Rated Flow SCFM Nominal Rating	Element Rating	Approx. Wt. lbs
				A	B	C	D	E	F	G			
I	CSL-377P-800F	CSL-376P-800F	8"	38	4	22 1/2	25 1/2	4	20	20	1800	1825	185
S	CSL-685P-1000F	CSL-384P(2)-1000F	10"	57 1/2	4	26 7/16	45	4	24	33	2900	6600	380
S	CSL-485P(2)-1200F	CSL-484P(2)-1200F	12"	69 1/2	4	26 7/16	57	4	24	25	4950	9410	465

* (2) denotes 2 filter elements

125/150# Pattern Flg	DIMENSIONS - inches			No. of Holes	Flange Thickness
	O.D.	B.C.	B.H.		
8"	13 1/2	11 3/4	0.88	8	0.38
10"	16	14 1/4	1	12	0.38
12"	19	17	1	12	0.5

Note: Model offerings and design parameters may change without notice.

Solberg – Discover the Possibilities

CSL44-5213

1151 Ardmore Ave. • Itasca, IL 60143 USA

Sales/Service: 630.773.1363 • Fax: 630.773.0727

E-mail: sales@solbergmfg.com • Web Site: www.solbergmfg.com