

Magnetic Products, Inc.

683 Town Center Drive,

Highland, MI 48357

Tel: 248-887-5600

Email: info@mpimagnet.com • Website: www.mpimagnet.com

Plate Magnet Adapters

Application:

MPI's Plate Magnet Adapters (PMA Series) are designed for use in gravity-fed angled chutes, which convey low to high volumes of product. Typical installations are below-the-flow, where the product flows over the magnetic face, providing optimum ferrous tramp metal retention in a wide variety of chute applications.

Operation:

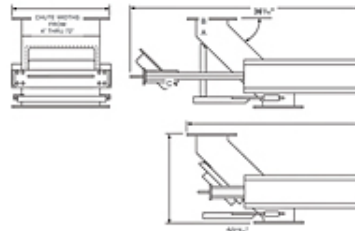
MPI's exclusive roller cleaning system provides easy operation and requires no heavy lifting or handling during the cleaning cycle. Simply terminate the product flow and release the (2) clamps that secure the magnet to the housing. Then, pull the magnet away from the chute, letting the collected tramp metal fall from the stripper plate. After cleaning, push the magnet back into operating position, secure in place with the (2) clamps, and resume your product flow.

Standard Features:

- Permanent Ceramic 8 magnet material
- 100% stainless steel housing
- Operating temperatures of 450° F
- 1" wide sealing flange around magnet along with heavy-duty clamps and gasket prevent product leakage
- Magnet roller glide mechanism provides easy operation and requires no heavy lifting or handling during cleaning cycle

Optional Features:

- Powerful Rare Earth magnet material
- Pre-drilled matching companion flanges for easy installation
- Lexan inspection windows
- Self-cleaning designs
- Custom designs available
- Double hump style



Results 1 - 4 of 4

Item #	Plate Magnet Series	Chute Opening Length "A"	Chute Flange Length "B"	Approx. Overall Height "C"	Effective Magnetic Field Depth	Weight	List Price
PMA-300-QC	300	3 in 76 mm	7.25 in 184 mm	18 in 466 mm	3 in 76 mm	118 lb 54 kg	QUOTE
PMA-400-QC	400	5 in 127 mm	9.25 in 235 mm	24 in 482 mm	5 in 127 mm	138 lb 63 kg	QUOTE
PMA-500-QC	500	8 in 203 mm	12.25 in 311 mm	26 in 546 mm	8 in 203 mm	173 lb 78 kg	QUOTE
PMA-600-QC	600	10 in 254 mm	14.25 in 362 mm	29 in 609 mm	10 in 279 mm	243 lb 110 kg	QUOTE

Results 1 - 4 of 4