

Hinged Belt Conveyors

ENDURA
-VEYOR
INC.



**Custom Engineering and
Manufacturing**

**Heavy Duty
Construction**

**2 1/2 in., 4 in., 6 in.
and 9 in. Pitch
Belts Available**

2 1/2" Pitch Hinged Steel Belt

STANDARD SPECIFICATIONS

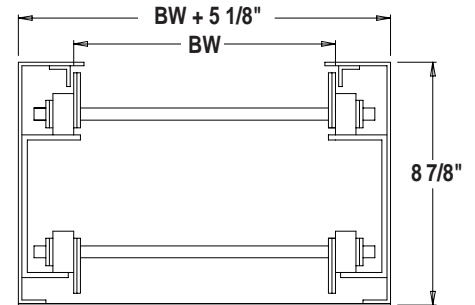
- Belt** 2 1/2 in. pitch plain metal belt. Belt pull 2500#. Pan thickness, .125 in.
- Belt Widths** Standard Widths. Belt may be furnished from 4 1/2 in. minimum to 36 in. maximum in 1 1/2 in. multiples.
- Frame** Closed style, 10 gauge formed steel. Upper/lower tracks, 2 in. x 1 1/4 in. angle.
- Bearing** Drive end - 2 bolt pillow block, sealed for life.
- Belt Speed** 10, 20 and 30 fpm (other speeds available).
- Motor & Reducer** 115/220V, 60 Hz single phase or 230/460V, 60 Hz 3 phase; TEFC motor, reversible.
- Sprockets** 6 tooth, 5 in. PD.
- Guards** Metal guards, totally enclosed, painted safety yellow.
- Curves** 20°-25°-30°-35°-40°-45°-60°
- Supports** Formed 12 ga. steel leg supports.

Available in low profile frame configuration

*Dependable Cost Effective
Material Handling Systems.*

OPTIONAL EQUIPMENT

- Cleats** 1 1/2 in. high, 1/4 in. flat stock (perforated cleats also available).
- Variable Speed** Available in 10-30 fpm.
- Electrical Controls** 1 or 3 phase, on-off switch, forward-off-jog reverse switch and thermal overload protection.
- Casters** 4 in. dia., both rigid and swivel with locks.
- Belt Apron** Plain, pimpled or pimpled and perforated.
- Min. Lower Horizontal= 2 ft. (Ref.)
Min. Upper Horizontal= 1 ft. 6 in. (Ref.)



4" Pitch Hinged Steel Belt

STANDARD SPECIFICATIONS

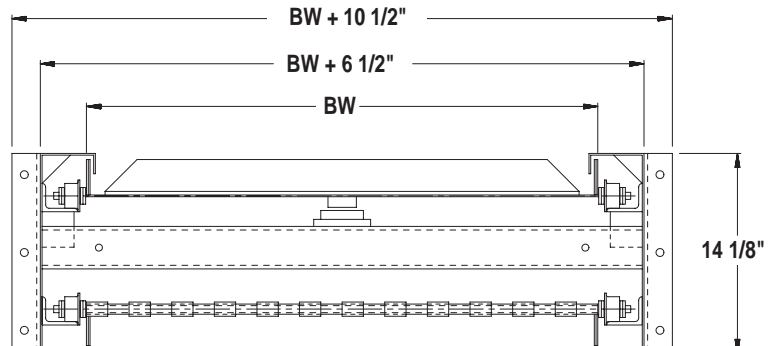
- Belt** 4 in. pitch plain metal belt. Belt pull 4000#. Pan thickness, 1/8 in.
- Belt Widths** 6 in., 12 in., 18 in., 24 in., 30 in., 36 in., 42 in., 48 in. Belt may be furnished from 6 in. minimum to 48 in. maximum in 3 in. multiples.
- Frame** Closed style, 10 gauge formed steel. Upper/lower tracks, 2 1/2 in. x 2 in. angle.
- Bearing** Drive end - 4 bolt flange, sealed for life.
- Belt Speed** 20 fpm (other speeds available).
- Motor & Reducer** 230/460V, 60 Hz 3 phase; TEFC motor, reversible.
- Sprockets** 6 tooth, 8 in. PD.
- Guards** Metal guards, totally enclosed, painted safety yellow.
- Curves** 20°-25°-30°-35°-40°-45°-60°
- Supports** Vertical - 4 in. channel
Horizontal - 3 in. channel
- Oiler** Multi-brush gravity feed



OPTIONAL EQUIPMENT

- Cleats** 2 1/2 in. high, 1/4 in. (perforated cleats also available).
- Variable Speed** Available in 10-40 fpm.
- Electrical Controls** 3 phase, on-off switch, forward-off-jog reverse switch and thermal overload protection.
- Casters** 4 in. dia., both rigid and swivel with locks.
- Belt Apron** Plain, pimpled or pimpled and perforated. Combination chain/rubber belt also available. Combination belt uses PVC 150.
- Infeed Hoppers** Built to suit application.
- Side Skirts** 10 gauge, available in 2 in. to 24 in. high.
- Min. Lower Horizontal= 3 ft. (Ref.)
Min. Upper Horizontal= 3 ft. (Ref.)

*Designed and Constructed for
of Continuous Operation.*



6" Pitch Hinged Steel Belt

STANDARD SPECIFICATIONS

Belt 6 in. pitch plain metal belt. Belt pull 9000#. Pan thickness, 1/4 in. (Others available)

Belt Widths Standard width may be furnished from 12 in. minimum to 96 in. maximum in 6 in. multiples.

Frame Open style, structural steel. Upper track - 4 in. ship channel
Lower track - 4 in. x 3 in. angle. Impact Beams - 4 in. I-Beam. Wear strip 1 1/2 in. x 1/2 in. thick flatbar on lower track.

Bearing Heavy duty pillow block, sealed and regreasable.

Belt Speed 0-50 fpm in 5 fpm. increments.

Motor & Reducer 230/460V, 60 Hz 3 phase; TEFC motor.

Sprockets 6 tooth, 12 in. PD.

Guards Metal guards, totally enclosed, painted safety yellow.

Overload Protection Anti-Rollback Device and shear pin hub assembly.

Curves 20°-25°-30°-35°-40°-45°-60°

Supports Vertical - 6 in. WF I-Beam
Horizontal - 3 in. I-Beam

OPTIONAL EQUIPMENT

Cleats 4 in. high, 1/4 in. angle iron.

Variable Speed Available in 10-40 fpm.

Electrical Controls 3 phase, forward-off switch and thermal overload protection.

Belt Apron Plain, pimpled or pimpled and perforated. Combination chain/rubber belt also available. Combination belt uses PVC 250.

Infeed Hoppers Built to suit application.

Side Skirts 7 gauge, available in 6 in. to 48 in. high.

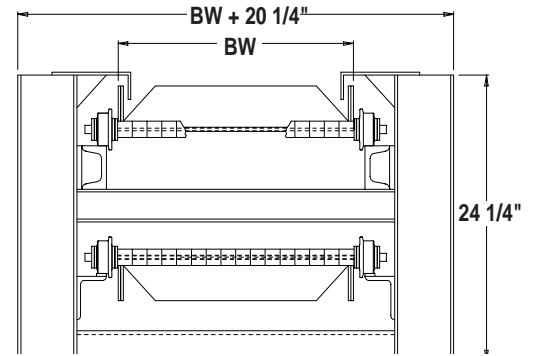
Oiler Multi-brush, gravity feed, manual or electric delivery.

Covers Bottom covers available in 10 gauge or 7 gauge.

Min. Upper Horizontal = 4 ft. 6 in. (Ref.)

Min. Lower Horizontal = 4 ft. 1 in. (Ref.)

Available in a Medium Duty closed style frame, formed 7 ga. construction.



9" Pitch Hinged Steel Belt

STANDARD SPECIFICATIONS

Belt 9 in. pitch plain metal belt. Belt pull 13000#. Pan thickness, 1/4 in.

Belt Widths Standard width may be furnished from 12 in. minimum to 96 in. maximum in 6 in. multiples.

Frame Open style, structural steel. Upper track - 4 in. ship channel.
Lower track - 4 in. ship channel. Impact Beams - 4 in. I-Beam.

Bearing Heavy duty pillow block, sealed and regreasable.

Belt Speed 0-50 fpm in 5 fpm increments.

Motor & Reducer 230/460V, 60 Hz 3 phase; TEFC motor.

Sprockets 6 tooth, 18 in. PD.

Guards Metal guards, totally enclosed, painted safety yellow.

Overload Protection Anti-Rollback Device and shear pin hub assembly.

Curves 20°-25°-30°-35°-40°-45°-60°

Supports Vertical - 6 in WF I-Beam
Horizontal - 5 in. I-Beam

Oiler Multi-brush, gravity-feed, manual.

OPTIONAL EQUIPMENT

Cleats 6 in. high, 1/4 in. angle iron.

Variable Speed Available in 10-40 fpm.

Electrical Controls 3 phase, forward-off switch and thermal overload protection.

Belt Apron Plain, pimpled or pimpled and perforated. Combination chain/rubber belt also available.

Infeed Hoppers Built to suit application.

Side Skirts 7 gauge, available in 6 in. to 48 in. high.

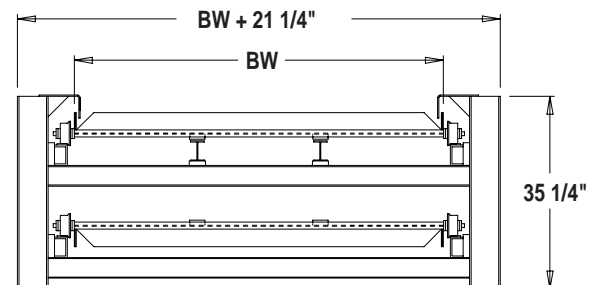
Oiler Multi-brush, gravity feed, electric delivery.

Covers Bottom covers available in 10 gauge or 7 gauge.

Min. Upper Horizontal = 5 ft. 3 in. (Ref.)

Min. Lower Horizontal = 4 ft. 8 in. (Ref.)

Quality Built Conveyors to Handle the Toughest Solid Waste Applications ...Effortlessly.

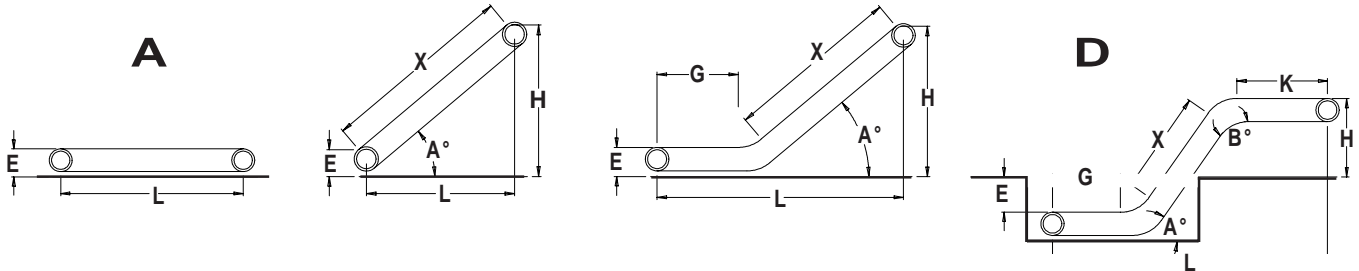


Toll Free: (800) 356-1593

Hinged Belt Conveyor Worksheet

Customer _____ Contact _____
 _____ Phone # _____
 _____ Date ____ / ____ / ____ P.O. # _____
 Quote # _____ Job # _____
 Delivery _____ Salesperson _____

Style:



Style of Conveyor A B C D

Belt Width: _____ Steel Combination

Pitch: _____

Side Skirt Height and Location: _____

Infeed: Above Floor or Pit Mounted: _____

Pit Dimensions (L x W x H): _____

Motor: _____ Hp Voltage: _____ (3 phase)

Controls Required: _____

Belt Speed: _____
 (Maximum of 50 FPM on chain driven conveyors)

Any other pertinent information _____

Dimensions (if known):

G _____ X _____ K _____
(lower horizontal) (incline section) (upper horizontal)

Total Conveyor Length: _____

Degree of Incline (A°): _____ Degree of Noseover (B°): _____

Floor Distance (L): _____

Infeed Height (E) to top of belt: _____

Discharge Height (H) to top of belt: _____

Angle Cleats: Height _____ Centers _____
 (Typically same height as side wings)

Belt Modifications: _____

Material Specifications

Product(s) Being Conveyed _____ Distance of Free Fall at Infeed _____ Continuous/Intermittent

Operating Cycle _____

Does Product Impact on Belt _____ Conveyor Located Indoors/Outdoors _____

Minimum/Maximum Product Size _____ Hours/Day of Operation _____ Special Conditions _____

% of Fines Present _____

Product Density #/cu. ft. _____

Product Wt./Hr. _____

Maximum Surge Load _____

Any Liquids Present _____

Product Temperature _____

Method of Loading _____

Endura-Veyor Use Only

Pricing: _____

\$ _____

net sell price to distributor

