

# Low Profile Slider Bed Conveyor

**ENDURA**  
CONVEYOR  
INC.



**Designed to convey light weight bulk parts  
and stampings.**

**Ideal for stamping press operations and  
plastic injection molding applications.**

**Most units ship assembled and  
ready to install.**

**Assembled and Tested**



# Low Profile Slider Bed Conveyor

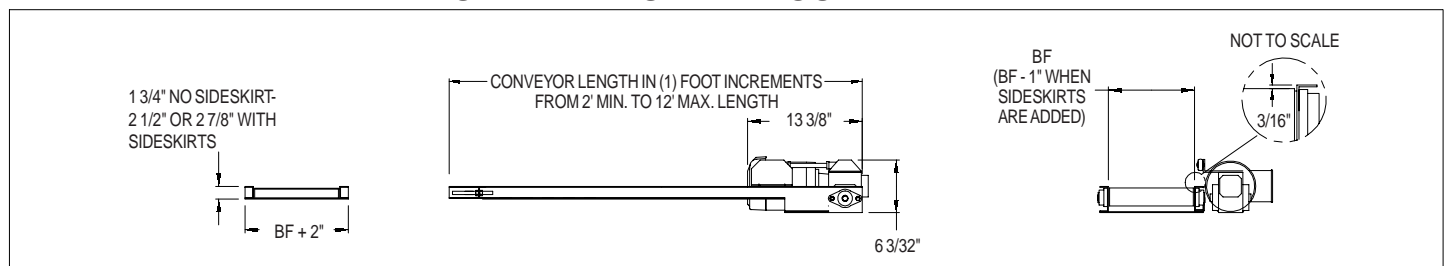
## STANDARD SPECIFICATIONS

- Frame Construction:** 12 ga. formed steel, bolt in beds
- Belt Widths:** 3" - 25" in two inch increments (effective widths are "BF" - 1" when overhung side skirts are added)
- Lengths Available:** 2' to 12' in one foot increments (minimum length is 3 times width)
- Belting Type:** Standard Rav 100 lite
- Belt Speeds:** 1/4 HP at 20, 40, 50, 70, 103 FPM (shaft mounted drive)
- Load Capacity:** 10 lbs. per ft., up to 100 lb. max.

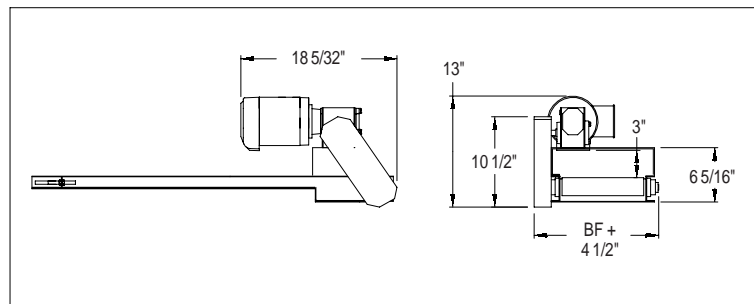
## OPTIONAL FEATURES

- Stainless steel construction
- Side skirts (see options below)
- Start/Stop controls
- Variable speed controller
- Wired power cords
- PVC side guides (see below)
- Urethane, Neoprene and static conductive belting
- Top mount, bottom mount, and center drives
- Leg supports
- Casters

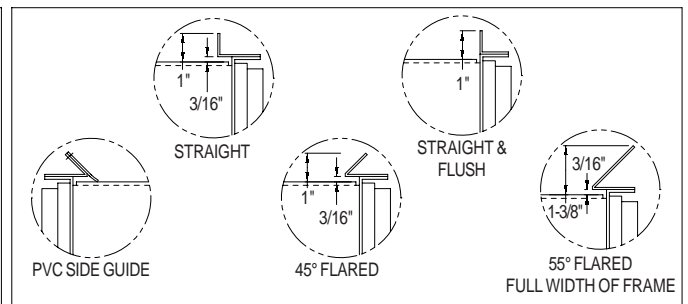
### STANDARD SHAFT MOUNT DRIVE



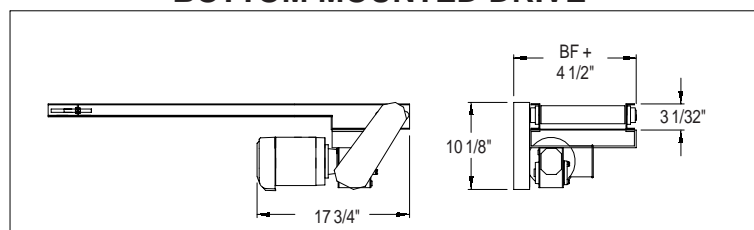
### OPTIONAL TOP MOUNTED DRIVE



### OPTIONAL SIDE SKIRTS



### OPTIONAL BOTTOM MOUNTED DRIVE



### OPTIONAL CENTER DRIVE

