



Vibratory Equipment
for
Power Plants

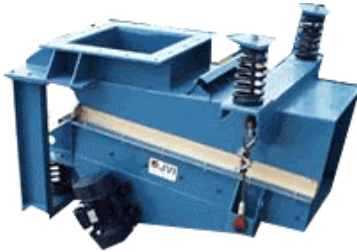
Focus On Industry



Vibratory Equipment for Power Plants

JVI vibratory equipment requires less maintenance than other types of feeders used in the power industry. Utilizing reliable JVI drives makes these rugged machines ideal for heavy-duty applications. Special liners available to prevent wet, frozen coal build-up and Grizzly feeders that reduce wear on crushers at power plants are just a sampling of the JVI products that are ideal for use by power plants.

Integrated Chutework Package for bin discharge



Vibratory Screener

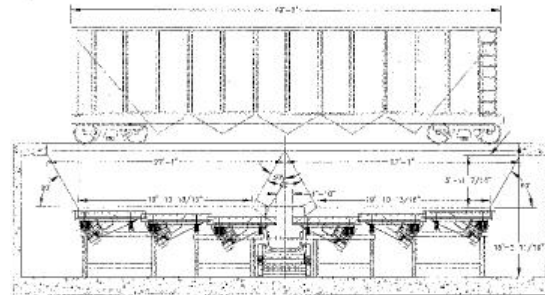
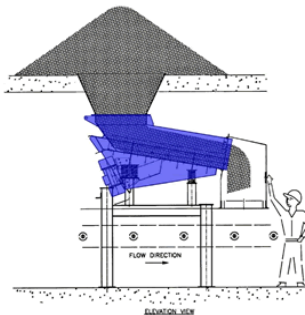


Grizzly feeders are ideal for coarse separation upstream of a crusher



RUGGED, RELIABLE, and LOW MAINTENANCE

Stockpile reclaim feeder arrangements



ExtroVib railcar unloading station feeder

Replaceable, rubber liner prevents build-up of sticky coal



JVI is familiar with the unique coal handling requirements of the power industry. JVI offers innovative designs that meet and exceed the expectations of power plants. JVI knows that vibratory equipment must be designed for rigorous and often times severe duty while at the same time it must achieve high feed rates and provide maximum wear resistance. Extensive experience and continuous new product development allow JVI to provide state of the art vibratory machines such as those shown above for the Power industry in North America.

Call to request more detailed information about each type of machine available for increased efficiencies at power plants.

Extrovib discharge system for truck and rail dump stations

