



Integrated Liquid Separator/ Inlet Vacuum Filter, For Vacuum Pumps

“LRS” Series, 3/4” to 6”, “SRS” Series 6” to 12”

APPLICATIONS & EQUIPMENT

- The integrated liquid separator is primarily used in air process systems where water or solvents need to be separated before the air reaches the air pump. Pump contamination leads to oil degradation, premature pump failures, and environmental problems.
- Designed for the air stream of a vacuum pump but can be used in most applications where liquid separation is needed.
- Food Packaging
- Pharmaceutical
- Chemical Processes
- Vacuum Pumps & Systems
- Metal Processing/Chip Processing
- Inquires Encouraged

FEATURES & SPECIFICATIONS

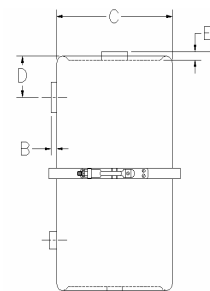
- 99% liquid removal efficiency
- Durable carbon steel construction with standard blue epoxy coating
- Integrated Baffle Mechanism
- 1” sight port for visual inspection
- Significant liquid holding capacity
- 1/4” taps on inlet/outlet ports standard for flange units
- Max vacuum level: Typically 1.3×10^{-3} mbar
- Wide range of operation flows

OPTIONS

- ATEX certified housings
- ASME & PED rated housings
- Multiple Configurations
- Stainless Steel - 1.4306 (304L) and 1.4435 (316L)
- Safety switch port for high liquid warning
- Electronics Package (Customer Supplied)
- Custom media
- Vacuum gauges
- Support legs
- Custom connections
- Additional ports

LRS Series Style Specifications:

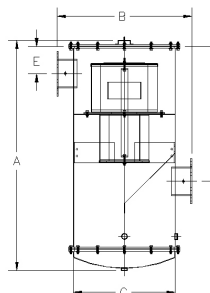
- “L” style configuration: side inlet, top outlet
- Multiple stage filtration:
 - Integrated Baffle System
 - Primary 99+% efficient filter element
- For aerosol apps, no additional knock out pot or separator needed
- Compact design
- 1/2” Drain port



Reference Only Model No. with Polyester Element	Inlet & Outlet	Connection Style	Reference Only DIMENSIONS - inches					SCFM Nominal Rating	Approx Holding Cap. gal
			A	B	C	D	E		
LRS-19-075HC	3/4"	FPT	17	3/4	7 11/16	3	3/4	60	1.5
LRS-19-100HC	1"	FPT	17	3/4	7 11/16	3	3/4	85	1.5
LRS-19-125HC	1 1/4"	FPT	18	3/4	7 11/16	3	3/4	85	1.5
LRS-19-150HC	1 1/2"	FPT	18	3/4	7 11/16	3	3/4	100	1.5
LRS-237-200HC	2"	FPT	22 1/4	3/4	12	3 3/4	3/4	135	2.5
LRS-237-250HC	2 1/2"	FPT	24 3/8	2 7/8	12	3 3/4	2 7/8	195	2.5
LRS-237-300HC	3"	FPT	25 1/8	2 7/8	12	3 3/4	2 7/8	300	2.5
LRS-275-400F	4"	Flange	24 3/8	4	16	5 1/5	4	520	4.5
LRS-275-600F	6"	Flange	40 1/2	5	16	4 1/4	5	830	4.5

SRS Series Style Specifications:

- Offset connections: lower side inlet, upper side outlet
- Multiple stage filtration:
 - Integrated Baffle System
 - Preseparator epoxy coated wire mesh strainer
 - Primary 99+% efficient filter element
- No additional knock out pot or separator needed
- Significant liquid and/or slurry holding capacity
- Removable base for easy access cleaning
- 1” Drain port
- Brackets for support legs and nameplate
- Lifting lugs



Reference Only Model No.	Inlet & Outlet	Connection Style	Reference Only DIMENSIONS - inches					SCFM Nominal Rating	Approx Holding Cap. gal
			A	B	C	D	E		
SRS-377/274S-600F	6"	Flange	53 1/2	28	20 1/4	33 1/2	11 1/2	1275	20
SRS-385/376S-800F	8"	Flange	68 1/2	40	30 1/4	40	8	1800	45
SRS-385/376S-1000F	10"	Flange	68 1/2	39	30 1/4	40	11 1/8	1800	45
SRS-485/384S-1200F	12"	Flange	78 1/2	50	40 1/4	50	15	3000	80

Dimension tolerance $\pm 1/4"$

Note: Model offerings and design parameters may change without notice.

Solberg – Discover the Possibilities

BLRS-5213

1151 Ardmore Ave. • Itasca, IL 60143 USA

Sales/Service: 630.773.1363 • Fax: 630.773.0727

E-mail: sales@solbergmfg.com • Web Site: www.solbergmfg.com