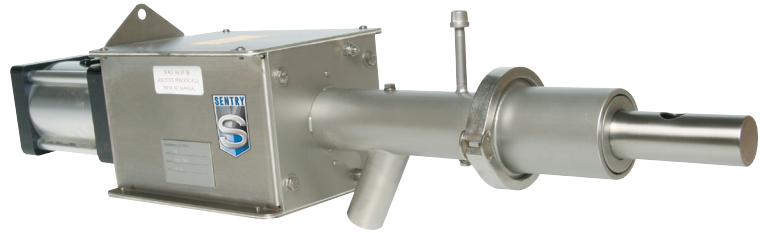




*The
Sampling
Connection*



MODEL PR AUTOMATIC SAMPLER

Automatically Samples from Dilute and Dense Phase Convey Lines

Features

- Designed to eliminate the degradation of product
- Includes 316 stainless steel tube and stainless steel body, filter/regulator and gauge, Teflon[®] seals, and maintenance-free industrial air cylinder
- Fully retracting sample tube will not restrict product flow between sample cycles
- 1/8" NPT capped purge nipple for sample tube cleanout

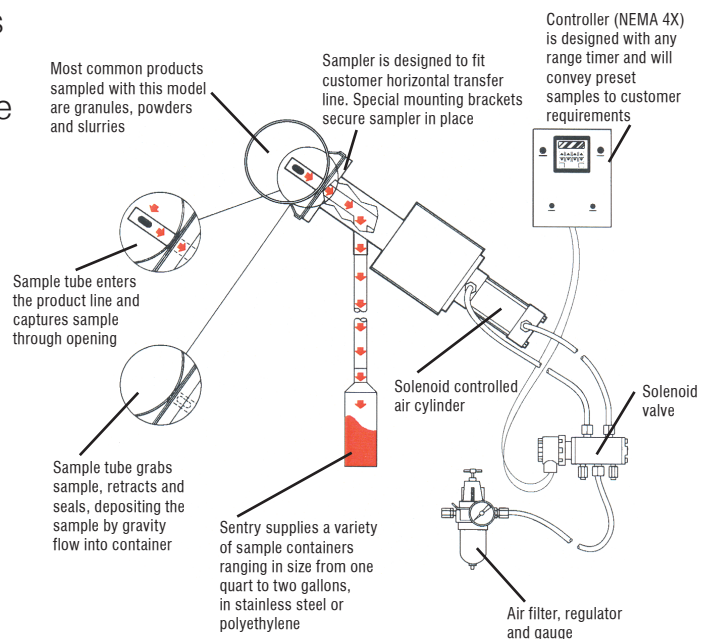
Options

- Sample tube in stroke lengths of 4", 6" and 8"
- Nosepiece for vertical applications
- Nickel-impregnated Teflon[®] for a non-stick surface
- Hardening treatments to protect against wear and abrasion

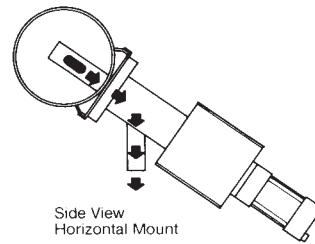
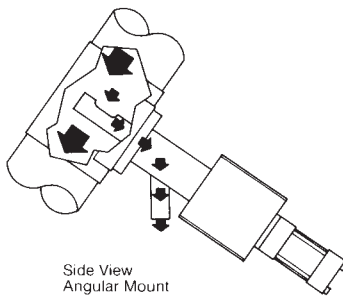
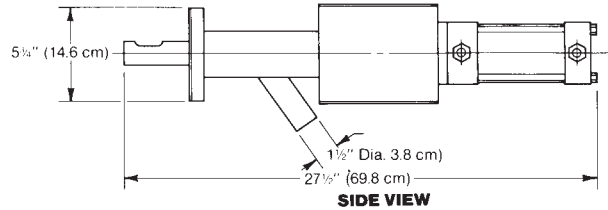
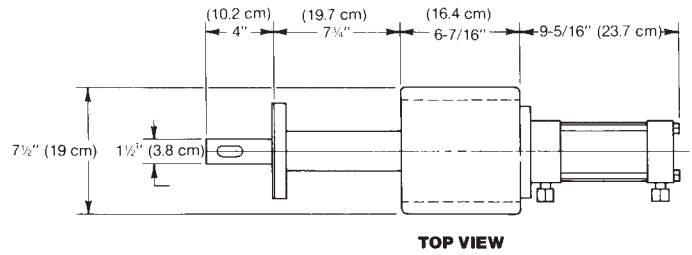
Description

The Model PR is designed for spot sampling of free-flowing materials in dilute and dense phase horizontal pneumatic transfer lines. Rapid cycling acquires a large volume of sample over a short period of time. The Model PR is also recommended for slurry sampling.

The Model PR samples when a solenoid-controlled air cylinder operates a reciprocating probe in the product flow. A representative sample collects by gravity to the discharge point.



MODEL PR TECHNICAL DATA



SPECIFICATIONS

- Basic Electrical Requirements 115 VAC, single phase, 60 Hz; control box fused to 2 amps
- Air Requirements 80 psig, 1.5 cfm per cycle
- Quantity of Sample 14 in³ / 230 cc
- Product Size 10 micron to 1/4"; larger sizes upon request
- Recommended Sampler Location bottom wall of horizontal lines 10'–12' (304.8 cm–365.8 cm) from any elbow
- Suggested Connection to Collection Point rigid metal or flexible tubing to a collection container
or multi-position collection cabinet
- Materials of Construction 304 and 316 stainless steel
- Temperature Range up to 250°F / 121°C

⚠WARNING

It is solely the responsibility of the end-user, through its own analysis and testing, to select products and materials suitable for their specific application requirements, ensure they are properly installed, safely applied, properly maintained, and limit their use to their intended purpose. Improper selection, installation, or use may result in personal injury or property damage.



SENTRY EQUIPMENT CORP

PO Box 127
Oconomowoc, WI 53066 USA
Phone: 262-567-7256
Fax: 262-567-4523

E-mail:
sales@sentry-equip.com

Website:
www.sentry-equip.com

For further information, contact:

The Sampling Connection