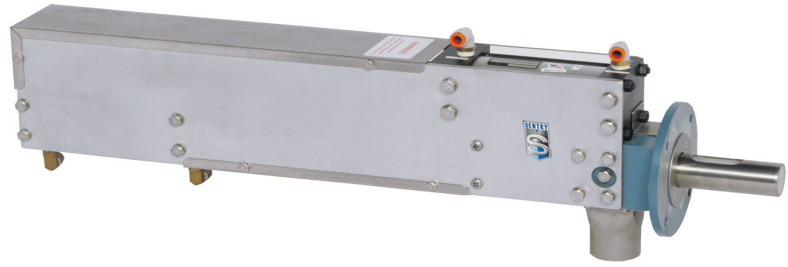




*The  
Sampling  
Connection*



## MODEL RPG AUTOMATIC SAMPLER

### *For Free-Flowing and Non-Free-Flowing Bulk Solid Materials*

#### *Features*

- Designed to eliminate the degradation of product
- Versatile installation in spouts, hoppers or transfer chutes
- Product contact materials are 304 stainless steel and Teflon<sup>®</sup> seals

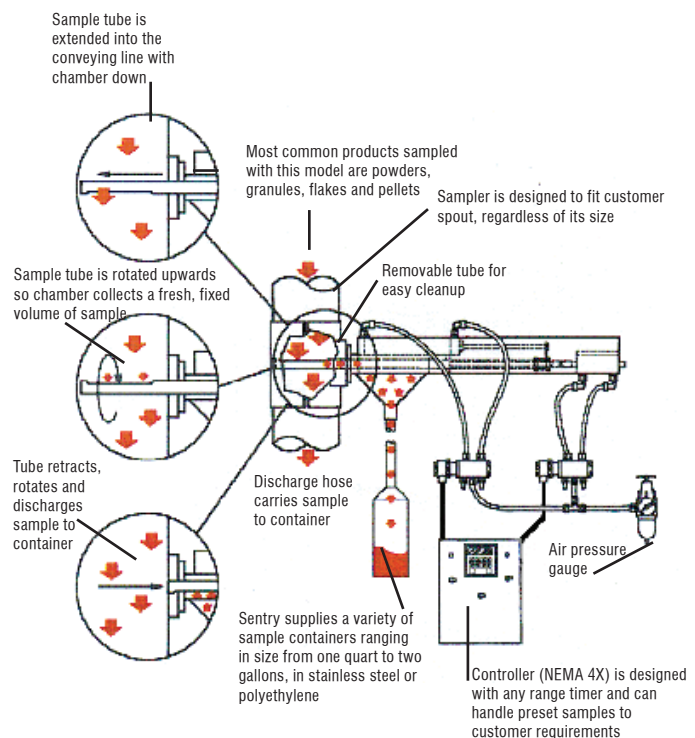
#### *Options*

- Available in stroke lengths from 4" / 10 cm to 8" / 20.3 cm
- Nickel-impregnated Teflon<sup>®</sup> for a non-stick surface
- Hardening treatments to protect against wear and abrasion

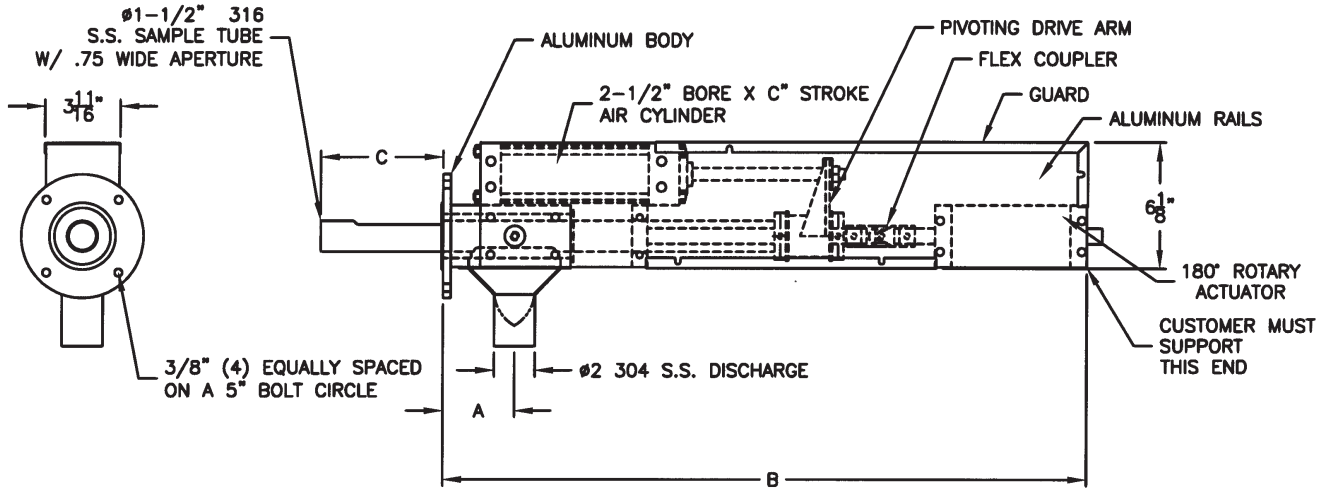
#### *Description*

The Model RPG is designed for automatic sampling of bulk solids such as granules, powders, flakes and pellets from spouts, hoppers or transfer chutes.

The Model RPG features an air cylinder and rotary actuator. The air cylinder pushes the sample tube into the process line. Once fully extended, the rotary actuator rotates the sample chamber into the upright position. The air cylinder then retracts the sample tube. The rotary actuator rotates the sample chamber to the down position and discharges the captured sample.



## MODEL RPG TECHNICAL DATA



MODEL RPG*				
	4" STROKE	6" STROKE	8" STROKE	10" STROKE
A	2 1/2"	3 1/2"	4 1/2"	5 1/2"
B	27 9/16"	31 9/16"	35 9/16"	39 9/16"
C	4"	6"	8"	10"
D	4 3/8"	5 3/8"	6 3/8"	7 3/8"

\* MODEL RPG MEASUREMENTS VARY. CONTACT FACTORY FOR ADDITIONAL AND/OR DIFFERENT STROKE DIMENSIONS IF REQUIRED

## SPECIFICATIONS

- Basic Electrical Requirements . . . . . 115/230 VAC, single phase, 50/60 Hz; control box fused to 2 amps
- Air Requirements . . . . . 80 psig, 1.5 cfm per cycle
- Quantity of Sample . . . . . determined by flow rate, aperture size and time in line
- Product Size . . . . . 10 micron to 1/4" / 6 mm; larger sizes upon request
- Recommended Location of Sampler. . . . . vertical gravity lines
- Suggested Connection to Collection Point . . . . . rigid metal or flexible tubing to a collection container or multi-position collection cabinet
- Materials of Construction . . . . . aluminum housing and rails; 316 SS sample tube; 304 SS discharge; acetal spacers and urethane wiper seal
- Temperature Range . . . . . up to 250°F / 121°C

**⚠ WARNING**

It is solely the responsibility of the end-user, through its own analysis and testing, to select products and materials suitable for their specific application requirements, ensure they are properly installed, safely applied, properly maintained, and limit their use to their intended purpose. Improper selection, installation, or use may result in personal injury or property damage.



**SENTRY EQUIPMENT CORP**

PO Box 127  
Oconomowoc, WI 53066 USA  
Phone: 262-567-7256  
Fax: 262-567-4523

**E-mail:**  
sales@sentry-equip.com

**Website:**  
www.sentry-equip.com

For further information, contact:

*The Sampling Connection*