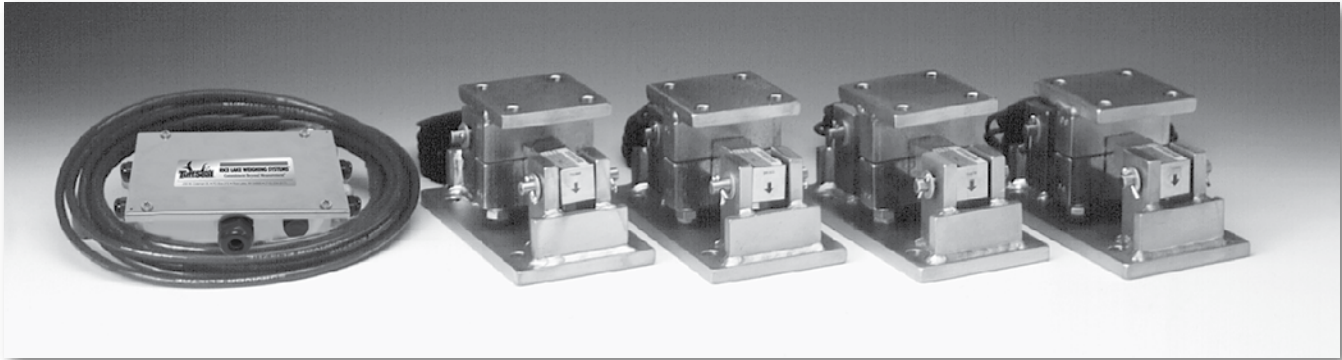


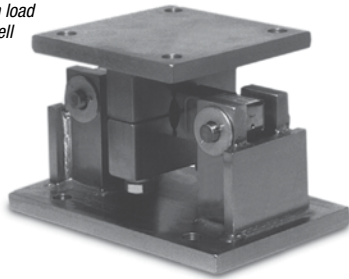
## RL1600 Series Stainless Steel



Available in configurations with three or four mounting assemblies.  
 Picture is a representation of actual product

The RL1600 Series Mounting Module Kit utilizes several Rice Lake Weighing Systems components to provide an unmatched level of performance in tank and hopper weighing applications. The RL1600 Series kit is ideally suited for indoor and outdoor process control operations in the medium-to high-capacity ranges. Each module incorporates self-checking capabilities for thermal expansion and contraction.

Fabricated stainless steel module with RL75016 SS double-ended beam load cell. Refer to page 150 for load cell specifications.



### COMPLETE KIT INCLUDES

- 1 JB4SS NEMA 4X stainless steel signal trim junction box
- 3 or 4 RL1600 stainless steel compression mounts
- 3 or 4 RL75016 SS stainless steel double-ended shear beam load cells (see page 150)
- 25' of our Hostile Environment EL147HE SURVIVOR® load cell cable

### APPLICATIONS

- Medium-to heavy-capacity tanks, bins, and hoppers
- Bulk material management

### STANDARD FEATURES

- Capacities (per module): 1000-75,000 lb (453.6-34,019.5 kg)
- 304 stainless steel construction
- Self-checking, easy-to-use design allows module to be bolted directly to tank leg without requiring additional mounting plates or load buttons
- Environmentally protected load cells
- Double-ended shear beam design, center loaded

### OPTIONAL FEATURES

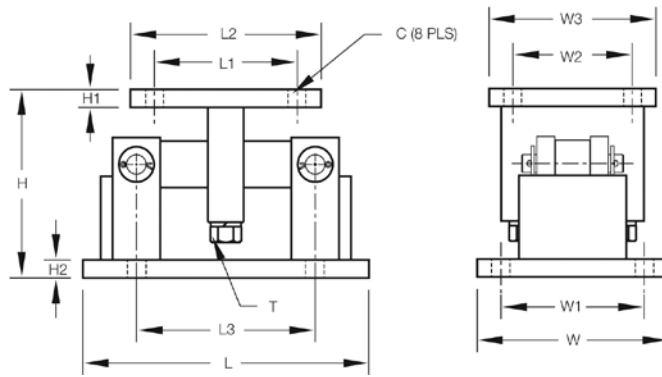
- Kits available with Vishay Sensortronics 65016W SS load cells

### LOAD CELL CERTIFICATIONS



Rice Lake load cells only

**RL1600 Series** 304 Stainless Steel



**DIMENSIONS**

RATED CAPACITY	C	H	H1	H2	L	L1	L2	L3	T	W	W1	W2	W3
<b>lb/inches</b>													
1000-5000	.56	5.00	.50	.50	9.25	2.75	4.00	6.25	1/2-13 UNC	5.00	3.75	2.75	4.00
10,000-25,000	.78	7.87	.75	.75	12.00	6.00	8.00	7.50	3/4-10 UNC	8.00	6.00	6.00	8.00
50,000-75,000	.78	9.31	1.00	1.00	16.25	6.50	9.00	11.50	1 1/4-7 UNC	12.00	9.50	6.50	9.00
<b>kg/mm</b>													
453.6-2268.0	14.2	127.0	12.7	12.7	235.0	69.9	101.6	158.8	1/2-13 UNC	127.0	95.3	69.9	101.6
4535.9-11,339.8	19.8	199.9	19.1	19.1	304.8	152.4	203.2	190.5	3/4-10 UNC	203.2	152.4	152.4	203.2
22,679.7-34,019.5	19.8	236.5	25.4	25.4	412.8	165.1	228.6	292.1	1 1/4-7 UNC	304.8	241.3	165.1	228.6

**ORDER INFORMATION**

LOAD RATING (PER MODULE)	PART #	PRICE
<b>Single Module (Does NOT Include Load Cell)</b>		
1000-5000 lb (453.6-2268.0 kg)	17813	Consult
10,000-25,000 lb (4535.9-11,339.8 kg)	17815	Consult
50,000 lb (22,679.6 kg)	17842	Consult
75,000 lb (34,019.5 kg)	25347	Consult
<b>3-Module Kit</b>		
1000 lb (453.6 kg)	18141	Consult
1500 lb (680.4 kg)	18142	Consult
2000 lb (907.2 kg)	18143	Consult
2500 lb (1134.0 kg)	18144	Consult
5000 lb (2268.0 kg)	18145	Consult
10,000 lb (4535.9 kg)	18146	Consult
15,000 lb (6803.9 kg)	18147	Consult
20,000 lb (9071.9 kg)	18148	Consult
25,000 lb (11,339.8 kg)	18149	Consult
50,000 lb (22,679.6 kg)	18150	Consult
75,000 lb (34,019.5 kg)	25352	Consult
<b>4-Module Kit</b>		
1000 lb (453.6 kg)	18152	Consult
1500 lb (680.4 kg)	18153	Consult
2000 lb (907.2 kg)	18154	Consult
2500 lb (1134.0 kg)	18155	Consult
5000 lb (2268.0 kg)	18156	Consult
10,000 lb (4535.9 kg)	18157	Consult
15,000 lb (6803.9 kg)	18158	Consult
20,000 lb (9071.9 kg)	18159	Consult
25,000 lb (11,339.8 kg)	18160	Consult
50,000 lb (22,679.6 kg)	18161	Consult
75,000 lb (34,019.5 kg)	25353	Consult

**ORDER INFORMATION**

LOAD RATING (PER MODULE)	PART #	PRICE
<b>3-Module Kit</b>		
1000 lb (453.6 kg)	18213	Consult
1500 lb (680.4 kg)	18214	Consult
2500 lb (1134.0 kg)	18216	Consult
5000 lb (2268.0 kg)	18217	Consult
10,000 lb (4535.9 kg)	18218	Consult
15,000 lb (6803.9 kg)	18219	Consult
20,000 lb (9071.9 kg)	18220	Consult
25,000 lb (11,339.8 kg)	18221	Consult
50,000 lb (22,679.6 kg)	18222	Consult
75,000 lb (34,019.5 kg)	25354	Consult
<b>4-Module Kit</b>		
1000 lb (453.6 kg)	18224	Consult
1500 lb (680.4 kg)	18225	Consult
2500 lb (1134.0 kg)	18227	Consult
5000 lb (2268.0 kg)	18228	Consult
10,000 lb (4535.9 kg)	18229	Consult
15,000 lb (6803.9 kg)	18230	Consult
20,000 lb (9071.9 kg)	18231	Consult
25,000 lb (11,339.8 kg)	18232	Consult
50,000 lb (22,679.6 kg)	18233	Consult
75,000 lb (34,019.5 kg)	25355	Consult
<b>Dummy Load Cells (Mild Steel)</b>		
1000-5000 lb (453.6-2268.0 kg)	18236	Consult
10,000-25,000 lb (4535.9-11,339.8 kg)	18237	Consult
50,000 lb (22,679.6 kg)	18238	Consult
<b>Equalizer Pads</b>		
1000 lb-5000 lb	—	Consult
10,000 lb-25,000 lb	—	Consult

WEIGHT MODULES