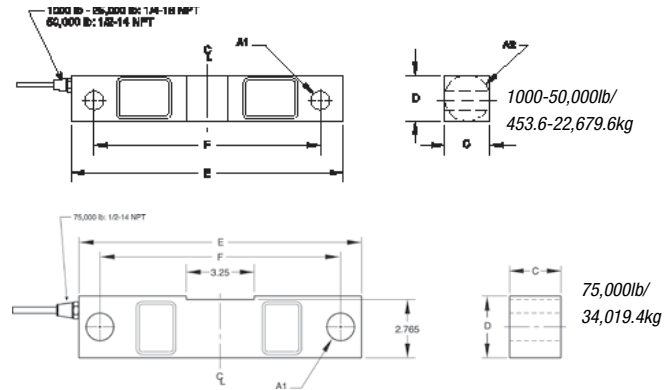




RL75016 SS Double-Ended Beam, Stainless Steel, IP67



Picture is a representation of actual product



SPECIFICATIONS

<p>Full Scale Output: 3.0 mV/V</p> <p>Output Resistance: 700 ohms, +/- 5</p> <p>Input Resistance: 770 ohms, +/- 10</p> <p>Material/Finish: Stainless steel</p> <p>Temperature: Compensated range 0°F to 150°F/-18°C to 65°C</p>	<p>Safe Overload: 150% Full scale</p> <p>Safe Sideload: 100% Full scale</p> <p>Rated Excitation: 10V DC (15V maximum)</p> <p>Nonlinearity: 0.07% Full scale</p> <p>Hysteresis: 0.02% Full scale</p>	<p>Deflection at Capacity: 1000-3000 lb=.01"/.3 mm, 5000 lb=.015"/.4 mm 10,000-20,000 lb=.022"/.6 mm, 25,000 lb=.036"/.9 mm 50,000 lb=.052"/1.3 mm, 75,000 lb=.07"/1.8 mm</p> <p>Insulation Resistance: 5000 megohms</p> <p>Seal Type: Environmentally sealed, IP67</p> <p>Cable Length: 25/7.6 m</p>	<p>Cable Diameter: .200 polyurethane jacket 1 k-25 k .305 polyurethane jacket 50 k-75 k</p> <p>Cable Color Code: Red + Excitation Black - Excitation Green + Signal White - Signal</p> <p>Warranty: Two-year limited warranty</p> <p>Approvals:  </p>
--	--	---	---

DIMENSIONS

RATED CAPACITY	A1	A2	C	D	E	F	G
lb/inches							
1000-5000	.50	1.25	1.25	1.25	7.50	6.25	.69
10,000-25,000	.81	1.99	1.44	1.94	8.75	7.50	.96
50,000	1.31	3.00	2.44	2.94	13.50	11.50	1.50
75,000	1.31	—	2.44	2.94	13.50	11.50	1.47
kg/mm							
453.6-2268.0	12.7	31.8	31.8	31.8	190.5	158.8	17.5
4535.9-11,339.8	20.6	50.8	36.6	49.3	222.3	190.5	24.4
22,679.6	33.3	76.2	62.0	74.7	342.9	292.1	38.1
34,019.4	33.3	—	62.0	74.7	342.9	292.1	37.3

ORDER INFORMATION

LOAD RATING	PART #	PRICE
1000 lb (453.6 kg)	17301	Consult
1500 lb (680.4 kg)	17303	Consult
2000 lb (907.2 kg)	17305	Consult
2500 lb (1134.0 kg)	17307	Consult
5000 lb (2268.0 kg)	17310	Consult
10,000 lb (4535.9 kg)	17312	Consult
15,000 lb (6803.9 kg)	17314	Consult
20,000 lb (9071.9 kg)	17316	Consult
25,000 lb (11,334.8 kg)	17318	Consult
50,000 lb (22,679.6 kg)	17320	Consult
*75,000 lb (34,019.4 kg)	25356	Consult

*75,000 lb capacity has a square center

INTERCHANGEABLE PRODUCTS

MANUFACTURER	MODEL	PAGE #
Rice Lake Weighing Systems	RL75016 WHE*	151
VPG Sensortronics	65016W	315
VPG Sensortronics	65016WH*	316
VPG Revere Transducers	9203**	—
VPG Celtron	DSR-HSS	203

WEIGH MODULE AVAILABLE

MANUFACTURER	MODEL	PAGE #
Rice Lake Weighing Systems	RL1600 Series	82 and 84

*Hermetically sealed

**Except 75 k capacity, C and D dimension for 9203 model is 1.22 inches

RICE LAKE WEIGHING SYSTEMS