

520

HMI DIGITAL WEIGHT INDICATOR



RICE LAKE WEIGHING SYSTEMS

Commitment Beyond Measurement™

520

HMI DIGITAL WEIGHT INDICATOR—Desktop and Panel Mount Models

Smaller. Faster. More Affordable.

Choosing between compact size and power is no longer an issue. The 520 digital weight indicator gives you both, and at a price that truly sets it apart from the rest.

Performance-driven features allow the 520 to easily integrate into process control, batching, level control, checkweighing and custom systems. Setpoints provide the flexibility to customize system functionality, and selectable A/D speed keeps production flowing. On-board communications enable stand-alone connections, while optional fieldbus or Ethernet interfaces make the 520 a powerful tool for capturing shop floor data and delivering it in real time.

The 520 also includes the “extras” that bridge the gap between straight weighing and weight-based process control. Features like peak hold, time and date, counting, and accumulation can be conveniently executed using multi-function keys. But there’s more—the 520’s accuracy and stability are enhanced by digital filtering that virtually eliminates interference from the vibration and electrical noise common in manufacturing environments.

The 520—delivering process control solutions for today... and beyond.



The 520 guides operators through weighing processes with a 16-character prompting display that can be programmed with up to eight different messages. Desktop model shown.

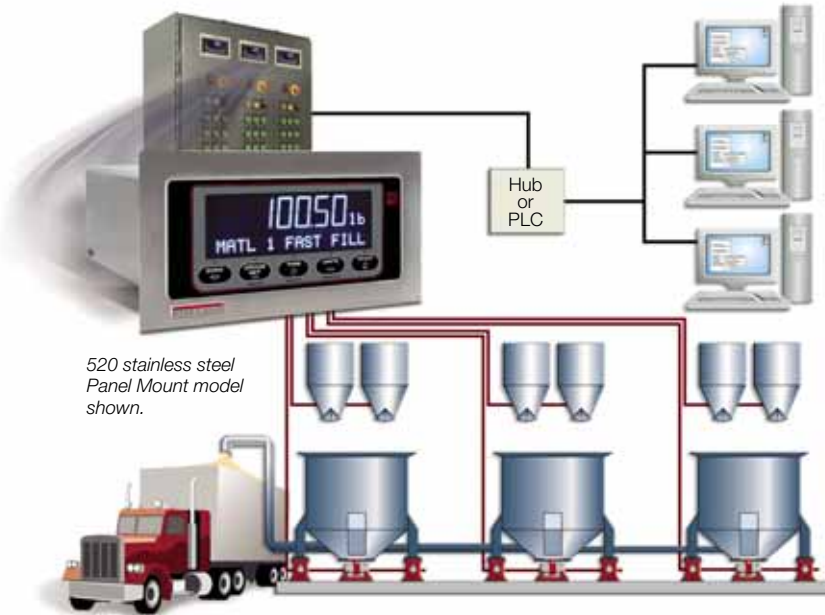
Standard Features

- Large 0.75", seven-digit VFD weight display
- Sixteen character 0.25" VFD prompting display
- Eight configurable operator prompts
- Three digital inputs and four digital outputs
- Selectable A/D measurement rate up to 120/second
- Two communication ports:
EDP port: full duplex RS-232 and RS-485
Printer port: full duplex RS-232 or simplex 20mA current loop
- Five programmable ticket formats for Gross, Net, Setpoints, Count and EDP
- Eighteen setpoint kinds
- Three preact selections with four attributes
- Stainless steel panel mount enclosure with a NEMA 4X/IP67 seal for washdown environments or painted steel desktop model with a NEMA 1 enclosure
- Time and date
- Push button or scrolled tare entry
- Expansion port for option card
- Power for (8) 350Ω or (16) 700Ω load cells
- Key functions: zero, gross/net, tare, units, print
- Over/accept/under checkweigh mode
- Peak hold
- Accumulation function
- Counting function

Options/Accessories

- Analog output: selectable 0-10V, 0-20mA, 4-20mA
- Ethernet TCP/IP 10-BASE T module
- DeviceNet™ interface
- Allen-Bradley® Remote I/O interface
- Profibus® DP interface
- BCD interface
- Desktop model with wall mount kit
- Desktop model with panel mount option (UMC2000 replacement)

DeviceNet™



520 stainless steel Panel Mount model shown.



Desktop Wall Mount



Desktop Panel Mount

Approvals



Measurement
Canada
Approved



Connect the 520 to data collection devices with stand-alone communications or achieve network integration with optional fieldbus or Ethernet interface option cards.

*Stainless Steel Panel Mount and Desktop Panel Mount models are UL recognized in Canada and the United States.

Your Rice Lake Weighing Systems distributor is:

RICE LAKE WEIGHING SYSTEMS
Commitment Beyond Measurement™



230 W. Coleman St. • Rice Lake, WI 54868 • USA
TEL: 715-234-9171 • FAX: 715-234-6967 • WEB SITE: www.rlws.com

© 2004 Rice Lake Weighing Systems PN74489 9/04
Specifications subject to change without notice