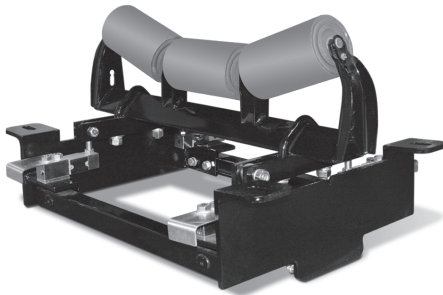


BCi In-Motion Belt Scale System



Standard Features

- Large 4.6"W x 3.4"H 320 x 240 pixel back-lit LCD graphical display
- NEMA 4X/IP66 stainless steel display enclosure
- Four bidirectional communication ports
- Rate and speed time displayed by the hour, minute or second
- Measurement displayed in feet or meters
- Unit of rate displayed in tons, pounds, kilograms, metric tons or long tons
- Digital I/O for totalizer
- Analog outputs optional
- Alarm outputs optional
- For added security, integrator has the ability to be password protected
- Communication protocol cards include Rockwell Automation's DeviceNet™, Rockwell Automation's Remote I/O, Rockwell Automation's Ethernet IP™, Profibus® DP, 4-20mA analog output, Ethernet TCP/IP, RS-232, RS-485, 20mA current loop
- Built in support for ticket printing

Approvals



920i® Integrator



Speed Wheel



Magnetic Shaft Encoder

Note: Idler not included

Weigh Frame Specifications

CONVEYOR WIDTHS:

18" to 72"

CAPACITY:

Up to 10,000 tph

BELT SPEED:

Up to 1,200 fpm

ACCURACY GUIDELINES:

Single idler system: 0.5%-1% total error

Two idler system: 0.25%-0.5% total error

Three idler system: <0.5% total error

Four idler system<0.25% total error

SYSTEM ACCURACY:

Guidelines assume clean belt with automatic tensioning system. Accuracy guidelines are typical.

System accuracy may vary depending on environmental influences.

APPLICATIONS:

Mining, quarries, bulk material blending, process control applications, utilities, truck/ barge/rail loading, retrofit applications

920i Integrator Specifications

POWER:

Line voltages: 115 or 230 VAC,

Frequency: 50 or 60 Hz

Power consumption:

340 mA, maximum @ 115 VAC (26 W) 240 mA @ 230 VAC (26 W)

EXCITATION VOLTAGE:

10 ± VDC, 16 x 350Ω or 32 x 700Ω load cells per A/D card

ANALOG SIGNAL INPUT RANGE:

-10 mV to +45 mV

ANALOG SIGNAL SENSITIVITY:

0.3 μV/graduation minimum @ 7.5 Hz

1.0 μV/graduation typical @ 120 Hz

4.0 μV/graduation typical @ 960 Hz

A/D SAMPLE RATE:

7.5 to 960 Hz, software selectable

RESOLUTION:

Internal resolution:

8 million counts

Weight display resolution:

9,999,999

SYSTEM LINEARITY:

± 0.01% full scale

DIGITAL I/O:

Four I/O channels on CPU board; optional 24-channel I/O expansion boards available

CIRCUIT PROTECTION:

RFI, EMI, ESD protection

SERIAL PORTS:

Four ports on CPU board support up to 115,200 bps; optional dual-channel serial expansion boards available

Port 1: Full duplex RS-232

Port 2: RS-232 with CTS/RTS; PS/2 keyboard interface via DB-9 connector

Port 3: Full duplex RS-232, 20 mA output

Port 4: Full duplex RS-232, 2-wire RS-485, 20 mA output

DISPLAY:

4.6" W x 3.4" H (116 W x 86 mm H), 320 x 240 pixel VGA Liquid Crystal Display (LCD) module with adjustable contrast

KEYBOARD:

27-key membrane panel, tactile feel, PS/2 port for external keyboard connection

OPERATING TEMPERATURE:

Legal: 14°F to 104°F (-10°C to +40°C)

Industrial: 14°F to 122°F (-10°C to +50°C)